

Technical data sheet for
INDUCTION COOKTOP 450mm
IN512-CB

- Heavy-duty construction
- Two 5KW induction zones
- Cabinet base with door
- Stainless steel cabinet interior
- Stainless steel exterior
- Easy clean
- Fully modular



IN512-CB

Overall Construction

Cooktop

- Welded hob with 1.5mm stainless steel bull nose
- Splashback and side panels 1.2mm stainless steel
- Front panels 0.9mm stainless steel
- 6mm thick ceramic glass cooking surface

Cabinet Base

- Fully modular for match suite finish
- Double skin 0.9mm stainless steel interior and exterior
- 63mm dia. heavy-duty 1.2mm stainless steel legs with adjustable feet

Controls

- Large easy use control knob
- Two 270mm diameter induction zones
- Infinitely variable power controls for each induction zone
- Automatic pan detection switches cooking zone off when pan removed
- Heating ON indicator lights (green) including pan detection indication
- Error mode indicator light (red)

Cleaning and Servicing

- All models with easy clean stainless steel external finish
- Fully sealed cooking surface
- Removable full stainless steel air intake filters (induction cooling)
- Front service access

Technical data sheet for INDUCTION COOKTOP 450mm

Specifications

Cooktop

2 x 5kW induction plates
Ø 270mm cooking zones

Electrical requirements

INE512-CB
10kW, 400-415Vac, 50/60hz, 3P+E
16A/phase
Electrical connection
130mm from RH side, 23mm from rear
742mm from floor

Dimensions

Width 450mm
Depth 812mm
Height 1085mm
Incl. splashback 1130mm

Nett weight

88kg

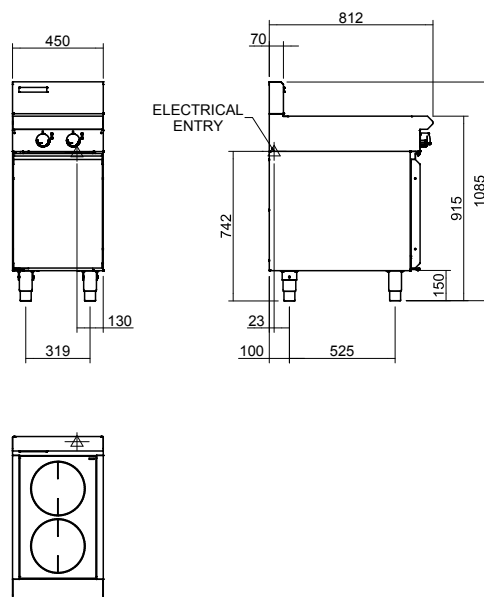
Packing data

0.54m³, 130kg
Width 495mm
Depth 865mm
Height 1255mm

Options

Castors
Plinth mounting

INE512-CB



BLUE SEAL

www.blue-seal.co.uk
www.bluesealevolution.com

United Kingdom

Blue Seal Limited

Unit 67

Gravelly Business Park

Gravelly

Birmingham B24 8TQ

England

Telephone 0121-327 5575

Facsimile 0121-327 9711

Email sales@blue-seal.co.uk

www.blue-seal.co.uk

Australia

Moffat Pty Limited

740 Springvale Rd

Mulgrave

Victoria 3170

Australia

Telephone 03-9518 3888

Facsimile 03-9518 3833

Email vsales@moffat.com.au

www.moffat.com.au

New Zealand

Moffat Limited

16 Osborne St

PO Box 10-001

Christchurch 8011

New Zealand

Telephone 03-389 1007

Facsimile 03-389 1276

Email sales@moffat.co.nz

www.moffat.co.nz



ISO9001
Quality
Management
Standard

Designed and manufactured by

MOFFAT

ISO9001

All Blue Seal products are designed and manufactured by Moffat using the internationally recognised ISO9001 quality management system, covering design, manufacture and final inspection, ensuring consistent high quality at all times.



In line with policy to continually develop and improve its products, Moffat Limited reserves the right to change specifications and design without notice.

Technical data sheet for
INDUCTION COOKTOP 900mm
IN514-CB

- Heavy-duty construction
- Four 5KW induction zones
- Cabinet base with doors
- Stainless steel cabinet interior
- Stainless steel exterior
- Easy clean
- Fully modular



IN514-CB

Overall Construction

Cooktop

- Welded hob with 1.5mm stainless steel bull nose
- Splashback and side panels 1.2mm stainless steel
- Front panels 0.9mm stainless steel
- 6mm thick ceramic glass cooking surface

Cabinet Base

- Fully modular for match suite finish
- Double skin 0.9mm stainless steel interior and exterior
- 63mm dia. heavy-duty 1.2mm stainless steel legs with adjustable feet

Controls

- Large easy use control knob
- Four 270mm diameter induction zones
- Infinitely variable power controls for each induction zone
- Automatic pan detection switches cooking zone off when pan removed
- Heating ON indicator lights (green) including pan detection indication
- Error mode indicator light (red)

Cleaning and Servicing

- All models with easy clean stainless steel external finish
- Fully sealed cooking surface
- Removable full stainless steel air intake filters (induction cooling)
- Front service access

Technical data sheet for INDUCTION COOKTOP 900mm

Specifications

Cooktop

4 x 5kW induction plates
Ø 270mm cooking zones

Electrical requirements

IN514-CB
20kW, 400-415Vac, 50/60hz, 3P+E
32A/phase
Electrical connection
130mm from RH side, 24mm from rear
742mm from floor

Dimensions

Width 900mm
Depth 812mm
Height 1085mm
Incl. splashback 1130mm

Nett weight

105kg

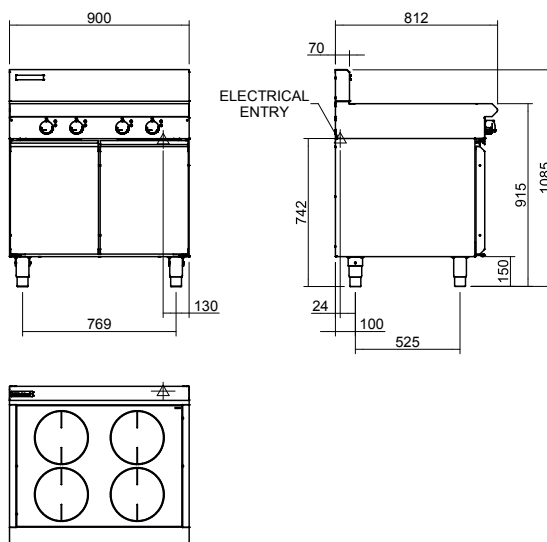
Packing data

1.03m³, 157kg
Width 945mm
Depth 865mm
Height 1255mm

Options

Castors
Plinth mounting

INE514-CB



BLUE SEAL

www.blue-seal.co.uk
www.bluesealevolution.com

United Kingdom

Blue Seal Limited

Unit 67

Gravelly Business Park

Gravelly

Birmingham B24 8TQ

England

Telephone 0121-327 5575

Facsimile 0121-327 9711

Email sales@blue-seal.co.uk

www.blue-seal.co.uk

Australia

Moffat Pty Limited

740 Springvale Rd

Mulgrave

Victoria 3170

Australia

Telephone 03-9518 3888

Facsimile 03-9518 3833

Email vsales@moffat.com.au

www.moffat.com.au

New Zealand

Moffat Limited

16 Osborne St

PO Box 10-001

Christchurch 8011

New Zealand

Telephone 03-389 1007

Facsimile 03-389 1276

Email sales@moffat.co.nz

www.moffat.co.nz



Designed and manufactured by

MOFFAT

ISO9001

All Blue Seal products are designed and manufactured by Moffat using the internationally recognised ISO9001 quality management system, covering design, manufacture and final inspection, ensuring consistent high quality at all times.



In line with policy to continually develop and improve its products, Moffat Limited reserves the right to change specifications and design without notice.